



CENTRAL GATEWAY REDEVELOPMENT STRATEGY

Creating a vision and implementation strategy to guide future development and growth in Central Gateway

PROJECT SCHEDULE

Citizen Advisory Committee (CAC) Kickoff Meeting
June 12, 2006

Background Analysis
May – June 2006

Commercial and Residential Market Study
May – August 2006

Create Preliminary Development Vision and Implementation Strategy
May – August 2006

Public Open House #1
September 19, 2006

Refine Vision and Implementation Strategy
Oct. – Nov. 2006

Analyze Key Redevelopment Sites
Nov. 2006 – January 2007

Public Open House #2
February 20, 2007
6:00 – 8:00 PM
Floyd Light Middle School Library
10800 SE Washington St

Finalize Vision and Implementation Strategy
February – April 2007

Citizen Advisory Committee (CAC) Final Meeting
April 2, 2007
6:30 – 8:30 PM

Investing in Portland's Future



CENTRAL GATEWAY OPEN HOUSE #2 Tuesday, February 20, 2007 ■ 6:00–8:00 PM Floyd Light Middle School ■ Library 10800 SE Washington Street

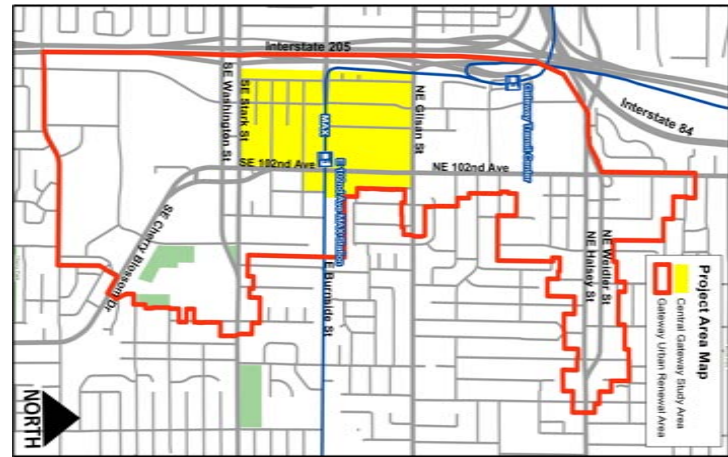
BACKGROUND: The Central Gateway Redevelopment Strategy is intended to build on previous planning and analysis work in the area, to refine and update that work as needed, and to ultimately stimulate private investment and move planning goals forward into implementation. The strategy will also serve to guide future public investment in the neighborhood.

You're invited to:

- Give feedback on recommended strategies and actions including new streets and a “super” Local Improvement District; and
- View preliminary urban design schemes and talk about their implications
- Participate in a question and answer session with Gateway area property and business owners, developers, city staff, and the general public.

For more information, please visit our website:

www.pdc.us/centralgateway



PDC
PORTLAND
DEVELOPMENT
COMMISSION

222 Northwest Fifth Avenue
Portland, Oregon 97209-3859

*Investing in
Portland's Future*

CENTRAL GATEWAY OPEN HOUSE #2
Tuesday, February 20, 2007 ■ 6:00–8:00 PM
Floyd Light Middle School Library ■ 10800 SE Washington Street
www.pdc.us/centralgateway