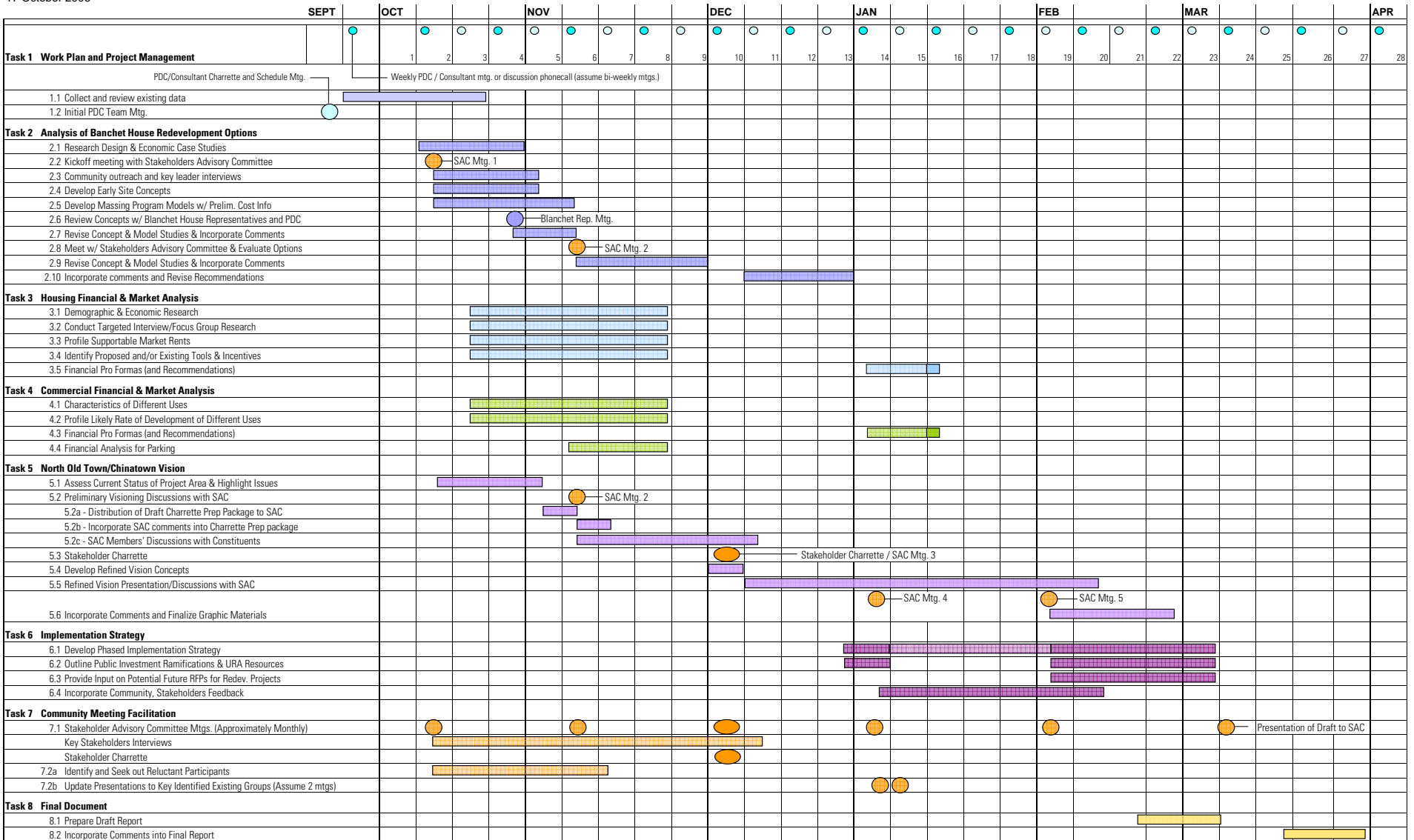


**PDC NORTH OLD TOWN / CHINATOWN REDEVELOPMENT STRATEGY -- PROJECT WORKPLAN**  
 DAO Architecture, LLC / Barney & Worth, Inc. / ED Hovee & Company, LLC  
 17 October 2006



**SAC Kick-off - Mtg 1, week 2 (Overview)**

- Introductions, background, and roles
- Brief walking tour of district
- Discussion of Blanchet Proposal and need for Vision
- Establish Goals
- SWOC Analysis
- Elicit additional contacts for outreach

**Blanchet Representatives Mtg, week 4**

- Present early outreach findings
- Analysis of previous designs and early case studies
- Present and discuss early site and building concepts
- Receive comments and incorporate where possible

**SAC Mtg 2, week 6 (Blanchet)**

- Blanchet Location Considerations
  - Present early outreach findings
  - Present preliminary financial analysis (Block 25 impact)
  - Present analysis of previous vision issues and elicit discussion
  - Present and discuss alternative location options
  - Receive comments and incorporate
  - Receive comments and incorporate
- District Vision Charrette Prep discussion
  - Discussion of draft charrette preparation package
  - Receive comments and incorporate into charrette prep package

**Stakeholder Charrette Mtg 3, week 10**

- Pre-Charrette planning meetings (2) with designers
- Design facilitation with stakeholder teams (3 half-day sessions)
- Design time (on boards) with designers (2 half-day sessions)
- Gallery/Open House
- Post-Charrette design revisions

**SAC Mtg 4, week 14 (Vision/Implementation)**

- Present charrette findings and concept updates
- Refine vision opportunities and constraints with SAC input
- Discussion of implementation plan issues

**Existing Groups Update Mtgs, weeks 14-15**

- OT/CT Neighborhood Assoc. & OT/CT Vision Committee

**SAC Mtg 5, week 19 (Vision/Implementation)**

- Present vision update graphics and likely draft Table of Contents
- Discuss SAC Vision and Implementation comments

**Presentation to SAC of Draft Report, week 24**

**Distribution of Final Report, week 27**