



December 16, 2009

PORTLAND DEVELOPMENT COMMISSION (PDC)

ADDENDUM NUMBER 04

Bid Number

09-54

BID NAME

PSU Business Accelerator Wet Lab Tenant Improvements ("Wet Lab TI Project")

PORTLAND, OREGON

Bid Proposals Due: December 22, 2009

By: 2:00 PM Pacific Time

This addendum provides changes to the specifications for the above-entitled project to be considered by each bidder. This addendum shall be included in the proposal and, when executing the contract, will be part thereof. Any changes made by this addendum to said plans (drawings) and specifications offset only the portion of the plans (drawings), words or paragraphs specifically mentioned herein, and the balance of the plans (drawings) and/or specifications remain in full force. It is the responsibility of all bidders to acknowledge receipt of this addendum in the bid proposal and to conform to this addendum.

**ITEM**  
**001**

**LOCATION**

**Project Manual**

Section Title/Modification

---

**Electrical**

115319 Laboratory Sterilization Equipment

Revise paragraph 2.2.B.1 to read:

1. "Electric Stainless Steel Steam Generator: Manufacturers standard steam generator to support specified autoclave chamber size 20" x 20" x 38. Electric powered ~~480V~~ **208V, 3-phase.**"

115363 Laboratory Glasswash Equipment

Add new paragraph A.2.b:

- "b. Provide optional 208V, 1-phase electrical kit."**

**ITEM**  
002

**LOCATION**

**Drawings**

Drawing/

Sheet Title/Modification

---

**Architectural**

A1.02A Partial Second Level Demo Plan  
Demolition Key Notes

**Revise key note "9" to read "Not Used"** and remove key note 9 tags from plan.

A7.02 Interior Elevations  
1/A7.02 HALL H211A

Revise door elevation. See attached drawing AA-14.

**Lab Furnishings**

LF3.02 Laboratory Equipment List

Revise the voltage for Equip # 10, Point-of-use water polisher to be **120V**.

**ITEM**  
003

**Pre-Bid Substitutions**

Section

Request

Determination

---

075200 - Modified Bituminous Membrane Roofing

Substitution Request for Bitutak Roofing Membranes is conditionally approved for Patch and Repair work provided it can match the existing roof materials and installation exactly, as well as meeting and or exceeding the requirements as set forth in the Contract Documents. Upon award of Contract, Contractor is required to submit detailed products for final A/E review and approval.

115319 – Laboratory Sterilization Equipment

Substitution Request - Tuttnauer Autoclave and specifically "Model 5596 Sterilizer" is not approved as the required service clearance at the back of the autoclave, cabinet depth and clearance for the door swing do not fit into the space constraints as set forth in the Contract Drawings.

123553 – Modular Plastic Laminate Lab Casework

Substitution Request - Euro-American Designs as manufactured by Custom Cabinets by Don, Inc. is not approved, as the products do not meet or exceed the

requirements set forth in the Contract Documents specifically Section 123553 Part A and Part B requirements.

233300 – Ductwork Accessories

Substitution Request – Greenheck FSDs are conditionally approved provided it meets and or exceeds the requirements as set forth in the Contract Documents. Upon award of Contract, Contractor is required to submit detailed products for final A/E review and approval.

265000 - Lighting

Substitution Request Kurt Versen P926 series is conditionally approved for luminaire type 'D' provided it meets and or exceeds the requirements as set forth in the Contract Documents. Upon award of Contract, Contractor is required to submit detailed products for final A/E review and approval.

Substitution Request Indy C6V series is conditionally approved for luminaire type 'D' provided it meets and or exceeds the requirements as set forth in the Contract Documents. Upon award of Contract, Contractor is required to submit detailed products for final A/E review and approval.

**ITEM**  
004

**Bidder Questions**

Question/Response

---

**Question #1:** How much water a day your client needs for the Milli-Q Integral on PDC Wet Lab Remodel? There are 4 versions of the Milli-Q Integral 3 liters an hour, 5, 10 & 15 which would feed a 30, 60 or 100 liter reservoir.

PDC Response: Based on anticipated end user requirements, provide 5 liter per hour unit with a 30 liter reservoir.

**Question #2** Clerestory glazing is on one hour wall but calls for just tempered glass. Is glazing here supposed to be rated?

PDC Response: Clerestory glazing on east wall of Wet Lab 211E is not part of the one hour wall and therefore is not required to be rated.

**Question #3** Door schedule for door H211A calls for door type B but elevations show door type C. The window and glazing at this door will need to be rated.

PDC Response: The Door Schedule is correct. Door H211A should be Door Type B. The West Elevation for Hall 211A has been revised in Addendum #4.

**Question #4:** Please confirm note 9 and 10 conflict, that ceiling vapor barrier is removed and where insulation is saved and reused.

PDC Response: Demolition Key Note 9 has been revised in Addendum #4 to clarify conflict with Key Note 15.

**Question #5:** Where is RTU-21 being relocated too and what are the electrical requirements?

PDC Response: The relocation of RTU-21 is shown on sheets M1.03 and M2.03.

**Question #6:** Where is the location and electrical requirements of the polisher in alternate 3A?

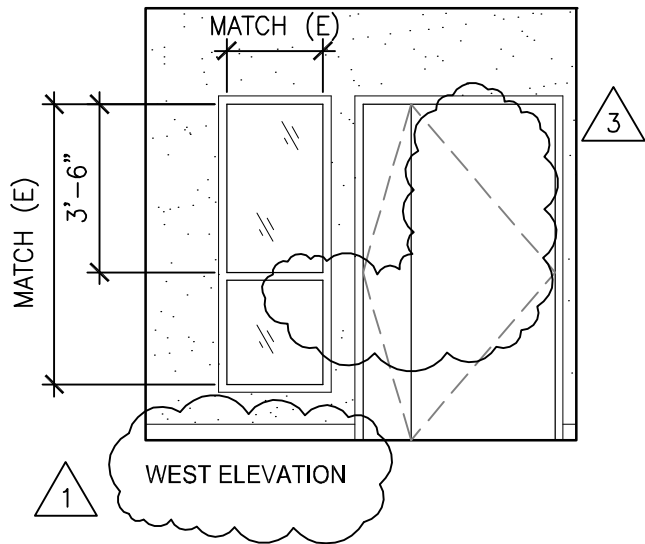
PDC Response: The polisher in alternate 3A is the Millipore DI unit shown on sheet E3.02, keynote #6.

Please direct all questions and concerns to **Nathan P. Mosley, CPPB**, at **(503) 823-3322**.

End of Addendum 04

Nathan P. Mosley, CPPB  
Construction Services/Prevailing Wage Supervisor  
Initials: NPM

FILE\_NAME.DWG



1  
A7.02

# HALL H211A

1/4" = 1'-0"

**Hennebery Eddy  
Architects  
Inc.**  
921 SW WASHINGTON STREET SUITE 250  
PORTLAND OREGON 97205  
(503) 227 4860 TEL.  
(503) 227 4920 FAX

Copyright 2009 Hennebery Eddy Architects Inc.

**PDC - PSU/OHSU B. A. Wet Lab TI**

2828 SW Corbett St. Portland, OR

HEA Project no. 09017

Date: 16 December 2009

Addendum #4

Reference Drawing: A7.02

3

# AA-14